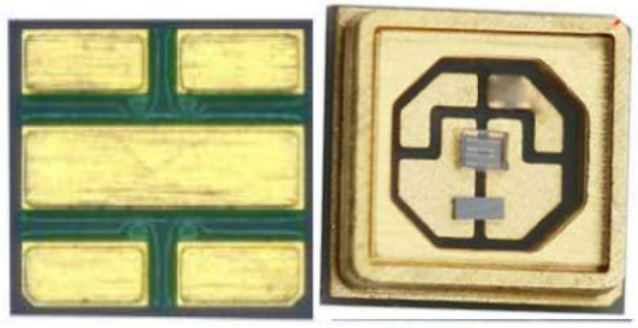




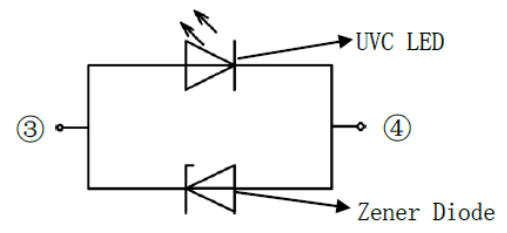
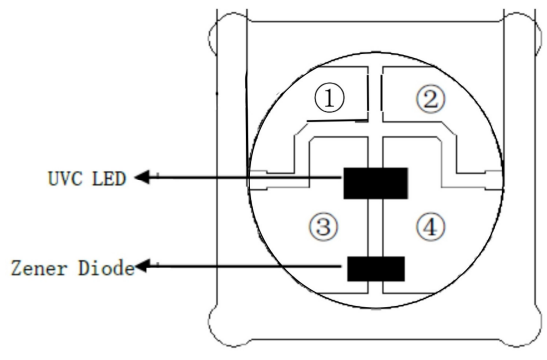
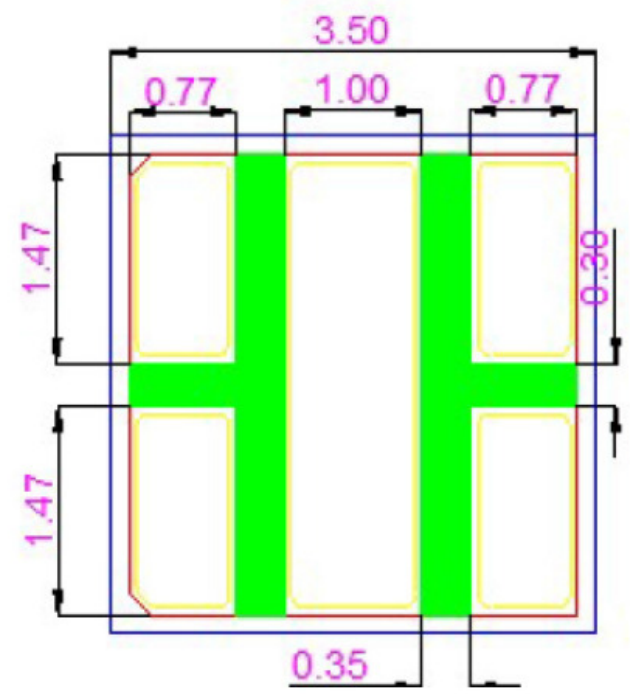
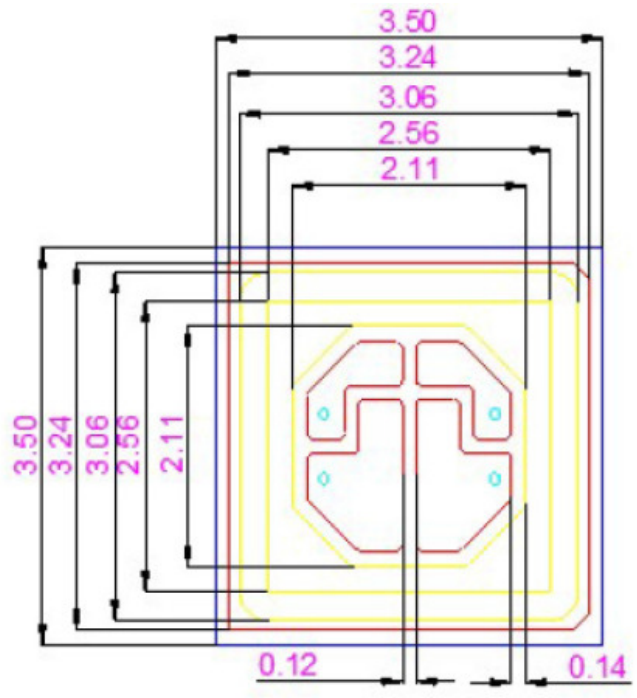
LED, LENS &
LED DISPLAYS



GL-3535UVC265H11



TAENTION
OBSERVE PRECAUTIONS
FOR HANDLING
ELECTROSTATIC
DISCHARGE
SENSITIVE
DEVICES





LED, LENS &
LED DISPLAYS



GL-3535UVC265H11

1, Absolute Maximum Rating (Ta=25°C)

Item	Symbol	Value	Unit
DC forward current	IF	100	mA
Power dissipation	PD	1000	mW
Operating temperature	Topr	"-40~+60	°C
Storage temperature	Ystg	-40~+80	°C
Reverse voltage	VR	5	V
Sold soldering temperature	Tsol	260°C/3Sec	---

Plus with Max 10ms,duty ratio max1/10

2, Initial Electrical/Optical Characteristics (Ta=25°C)

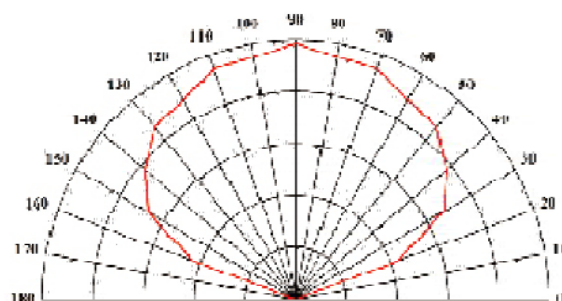
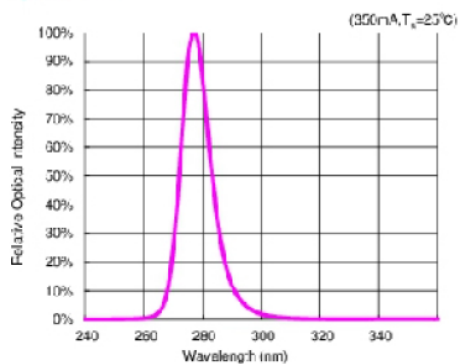
Item	Symbol	condition	Min	Type	Max	Unit
DC forward Voltage	VF	I=100mA	5	6	8	V
DC reverse Current	IR	V=5V	----	----	5	μ A
Wavelength	WD	I=100mA	260	265	270	Nm
FWHM(nm)	$\Delta \lambda$	I=100mA	----	11	----	Nm
Output Power Pout(mW)	IV	I=100mA	10	12	14	mW
50%Power Angle	2 θ 1/2	I=100mA	----	120	----	deg

3, Typical Electrical & Optical Characteristics at TA = 25° C

Wavelength h (nm)	Dimension (mm)	Optical Output PowerPo [mW] IF /100mA		VoltageVF [V]		Viewing Angle2 θ % [°]
		min	max	min	max	
265nm ± 5	3.5*3.5	10	14	5	8.5	120

4, Optical Characteristics (T=25° C, IF= 100mA)

Spectrum





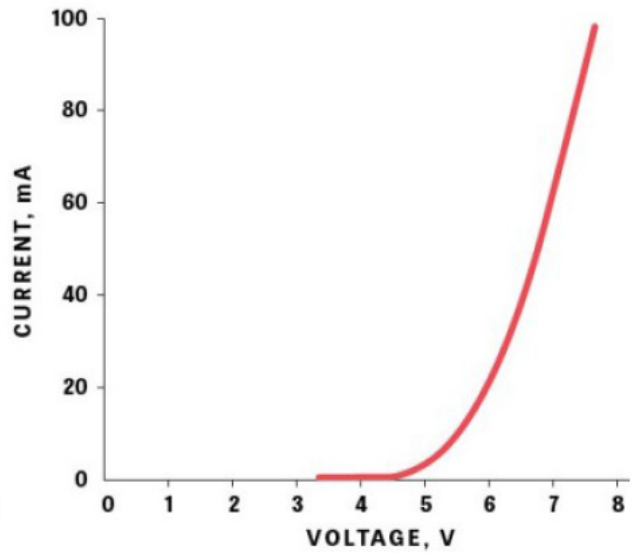
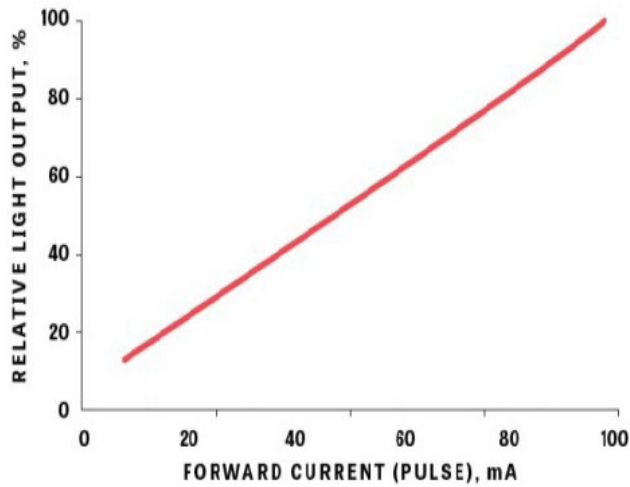
LED, LENS &
LED DISPLAYS



GL-3535UVC265H11

5. Electrical Characteristics (T=25° C, IF= 100mA)

Light Output over Current



Features:

- Environmental friendly : No Hg, Cd, Br, Pb
- Physical sterilization process : High Sterilizing Rate
- Low energy consumption
- Long service life

Other Remarks

1. Do not touch the surface of the led, in case to affect the normal emitting.
2. Make sure the right positive and negative pole.
3. Do not watch closely, it is harmful to your eyes.

Life Testing (T=25° C, IF= 100mA)

Life Expectancy Data

